

Winter school

Master Studies in Sustainable Development and Management

MASUDEM

Project 101082797

Call: Erasmus-EDU-2022-CBHE

Location: Srinakharinwirot University, Bangkok

Date: February 5-9, 2024

Theme: Social inclusiveness and diversity in higher education

Trainers of school:

1. **Prof. Anetta Caplanova, PhD.**, the MASUDEM project coordinator
University of Economics, Bratislava, Slovakia.

Topic: Designing inclusive HE curriculum

2. **Associate Prof. Martina Rašticová, PhD.**
Mendel University in Brno, Brno, Czech Republic.

Topic: Embracing Diversity: Fostering Inclusion in Higher Education

3. **Associate Prof. Raul Sanchez, PhD.**
Pablo de Olavide University, Seville, Spain.

Topic: Legal Approaches to Diversity and Social Inclusiveness in Higher Education

4. **PhD. student Viktória Nagy**, student counsellor, psychologist
Eötvös Loránd University, Budapest, Hungary

Topic: Supporting students from diverse backgrounds



**Co-funded by
the European Union**

Schedule

Monday 5.2.2024

Time	Classess	Room
09.00 – 12.00	Associate Prof. Martina Rašticová, PhD. <i>Topic: Embracing Diversity: Fostering Inclusion in Higher Education</i>	15 th floor M.L. Pin Malakul Building
12.00 – 13.30	Lunch	15 th floor M.L. Pin Malakul Building
13.30 – 16.30	Associate Prof. Raul Sanchez, PhD. <i>Topic: Legal Approaches to Diversity and Social Inclusiveness in Higher Education</i>	15 th floor M.L. Pin Malakul Building

Tuesday 6.2.2024

Time	Classess	Room
09.00 – 12.00	Associate Prof. Raul Sanchez, PhD. <i>Topic: Legal Approaches to Diversity and Social Inclusiveness in Higher Education</i>	15 th floor M.L. Pin Malakul Building
12.00 – 13.30	Lunch	15 th floor M.L. Pin Malakul Building
13.30 – 16.30	Associate Prof. Martina Rašticová, PhD. <i>Topic: Embracing Diversity: Fostering Inclusion in Higher Education</i>	15 th floor M.L. Pin Malakul Building

Wednesday 7.2.2024

Time	Classess	Room
09.00 – 12.00	Prof. Anetta Caplanova, PhD. <i>Topic: Designing inclusive HE curriculum</i>	15 th floor M.L. Pin Malakul Building
12.00 – 13.30	Lunch	15 th floor M.L. Pin Malakul Building



**Co-funded by
the European Union**

13.30 – 16.30	PhD. student Viktória Nagy <i>Topic: Supporting students from diverse backgrounds</i>	15 th floor M.L. Pin Malakul Building
---------------------	--	---

Thursday 8.2.2024

Time	Classes	Room
09.00 – 12.00	PhD. student Viktória Nagy <i>Topic: Supporting students from diverse backgrounds</i>	15 th floor M.L. Pin Malakul Building
12.00 – 13.30	Lunch	15 th floor M.L. Pin Malakul Building
13.30 – 16.30	Prof. Anetta Caplanova, PhD. <i>Topic: Designing inclusive HE curriculum</i>	15 th floor M.L. Pin Malakul Building

Friday 9.2.2023

Time	Classes	Room
09.00 – 12.00	Jim Thomson Culture Heritage for sustainable (Bus is provided)	Excursion
12.00	Lunch (Individual payment)	15 th floor M.L. Pin Malakul Building
13.30 – 16.30	Local Simply in Love in Bangkok for sustainable (Bus is provided)	Excursion



**Co-funded by
the European Union**



Transportation Systems in Bangkok with Stops near Prasarnmit Campus

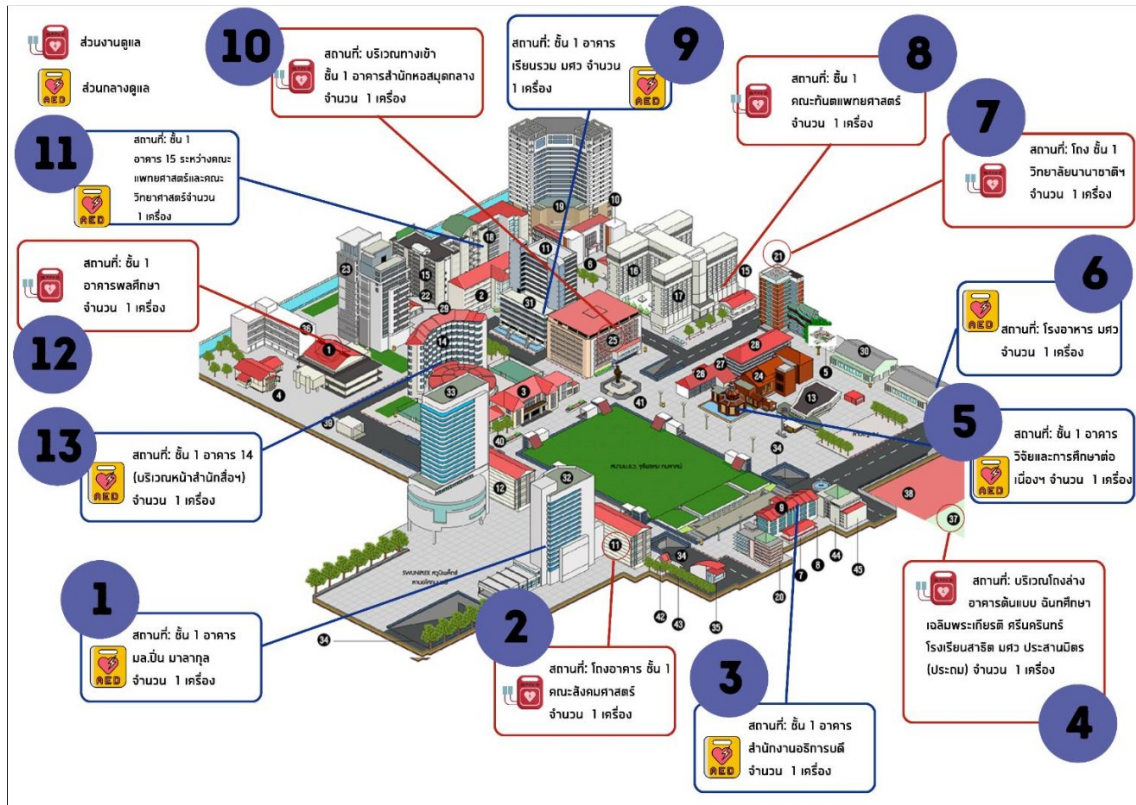
1. Buses on Sukhumvit Road.
Regular Bus No.: 1, 2, 8, 13, 25, 40, and 48
Air-conditioned Bus No.: 511, 13
Special Air-conditioned Bus No.: 6
2. Buses on New Petchburi Road.
Regular Bus No.: 11, 23, 58, 60, 72, 93, 99, 113, and 206
Air-conditioned Bus No.: 11, 12, 23, 60, 72, 93, and 206
Special Air-conditioned Bus No.: 3, 10, 35
3. Buses on Asoke Road.
Regular Bus No.: 38, 98 and 136
Air-conditioned Bus No.: 136, and 185
4. Boats on Sansaeb canal are available from 05.30 am. - 19.30 pm.
5. The sky train (BTS) provides easy, fast and inexpensive transportation on two main roads and runs throughout downtown Bangkok: Sukhumvit, Silom and Phaholyothin. The closest station to campus is Asoke station which located at the corner of Sukhumvit and Asoke roads.
6. The subway (MRT), Phetchaburi and Sukhumvit stations are close to the campus. From Phetchaburi MRT station, just leave through exit 2 (Asoke Pier) and walk along Asoke road for ten minutes. From Sukhumvit MRT station exit 2, you can either walk (15 minutes) or take a taxi through the end of Sukhumvit 23 to get to the campus.



Co-funded by
the European Union

Transportation to SWU Ongkharak, Nakhorn Nayok province

1. **Van @ Victory Monument**
Line 1: Victory Monument - Future Park Rangsit
Line 2: Victory Monument - Future Park Rangsit-Bangna
2. **Van @ Future Park Rangsit**
Line 1: Go to the front of Shell Auto Car Service near Central Department Store
Return to Future Park Rangsit, go to the bridge1 (Main Entrance gate)
Line 2: Future Park Rangsit - SWU Ongkharak
3. **Bus**
Line 1: Bangkok - Future Park Rangsit
Regular Bus No.: 29,34,39,59, and 95
Air-conditioned Bus No.: 503, 10, 13, 20, 21, 24, and 39
Euro II Bus No.: 510, 22, 522, 34, 59, and 95
Line 2: Local Air-conditioned Bus No. 381
(See a sign at the front of the bus Shown "To SWU Ongkharak" in Thai language)
(Return to Future Park Rangsit, go to the front of the Princess Sirindhorn's Medical Center)



No. 1 is the M.L. Pin Malakul Building

Map
<https://www.swu.ac.th/location.php>

MASUDEM
Winter School in SWU Bangkok

SCAN ME



Srinakharinwirot University
114 Sukhumvit 23 Bangkok 10110, Thailand

02-649-5000 # 15550
02-649-5000 # 12256

suppanunta@g.swu.ac.th
thunyathorn@g.swu.ac.th



**Co-funded by
the European Union**

Hotel Recommendations near Srinakharinwirot University, Bangkok Thailand

Mövenpick Hotel Sukhumvit 15 Bangkok

We Price Match

47 Sukhumvit Soi 15 Klongtoey, Wattana, 10110 Bangkok, Thailand – [Great location - show map](#) –
Metro access



Grand Mercure Bangkok Atrium

We Price Match

1880 New Petchburi Road, Huay Kwang, Bangkok, Huai Khwang, 10310 Bangkok, Thailand –
[Good location - show map](#)

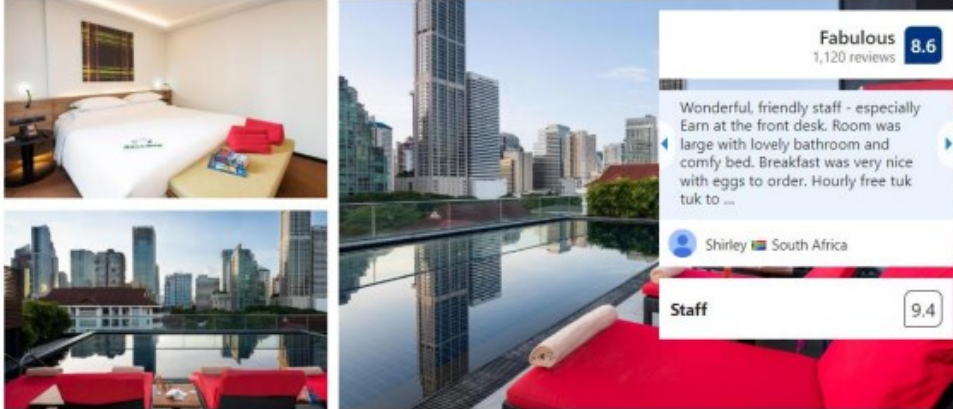


Co-funded by
the European Union

Maitria Mode Sukhumvit 15 Bangkok - A Chatrium Collection

We Price Match

81 Sukhumvit Soi 15, Sukhumvit Road, Klongtoey- Nua, Wattana, Wattana, 10110 Bangkok, Thailand –
[Great location - show map](#)



Admiral Premier Bangkok

We Price Match

138 Soi 23 Sukhumvit Road, Wattana, 10110 Bangkok, Thailand – [Great location - show map](#) –
Metro access

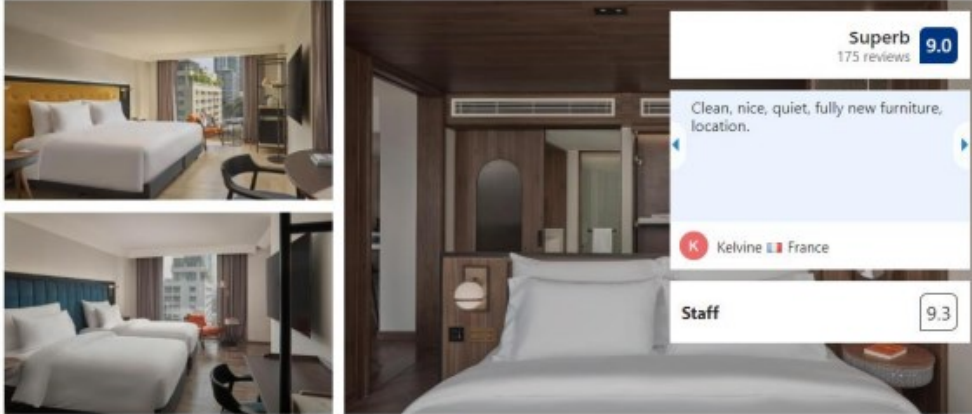


Co-funded by
the European Union

Public House Hotel - Sukhumvit 31


 We Price Match

 249 Soi Sukhumvit 31, Khlong Tan Nuea, Wattana, Bangkok 10110, Wattana, 10110 Bangkok, Thailand – **Excellent location** - [show map](#)



Asoke Residence Sukhumvit by UHG

 We Price Match

 235/20-25 Sukhumvit Soi 21 (Asoke), Klongtoey Nua, Wattana, Wattana, 10110 Bangkok, Thailand – **Great location** - [show map](#) – Metro access

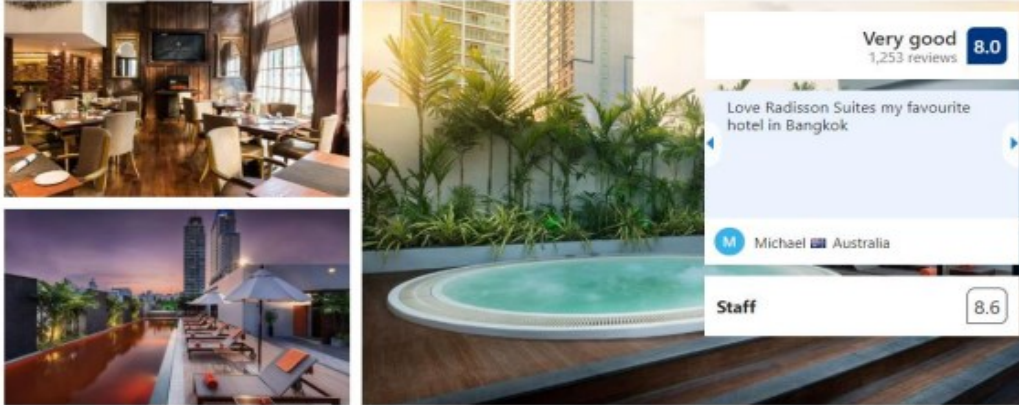


**Co-funded by
the European Union**

Radisson Suites Bangkok Sukhumvit - SHA Extra Plus

 We Price Match

 23/2-3 Sukhumvit 13, Sukhumvit Road, Klongtoey Nua, Wattana, Wattana, 10110 Bangkok, Thailand
 – **Great location - show map** – Metro access



Lancaster Bangkok

 We Price Match

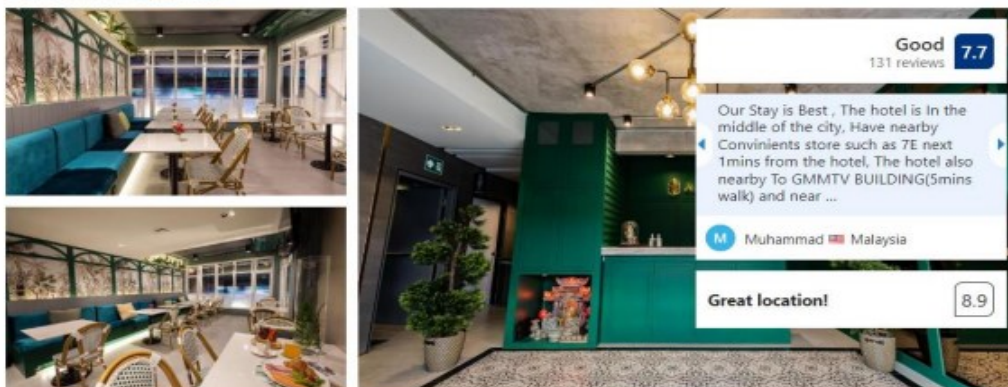
 1777 New Phetchaburi Road, Huai Khwang, 10310 Bangkok, Thailand – **Great location - show map**
 – Metro access



Narawad Boutique Hotel

 We Price Match

 44/1-3, Soi Sukhumvit 21, North Klongtoey, Wattana District, Wattana, 10110 Bangkok, Thailand – **Great location - show map**



Co-funded by
the European Union